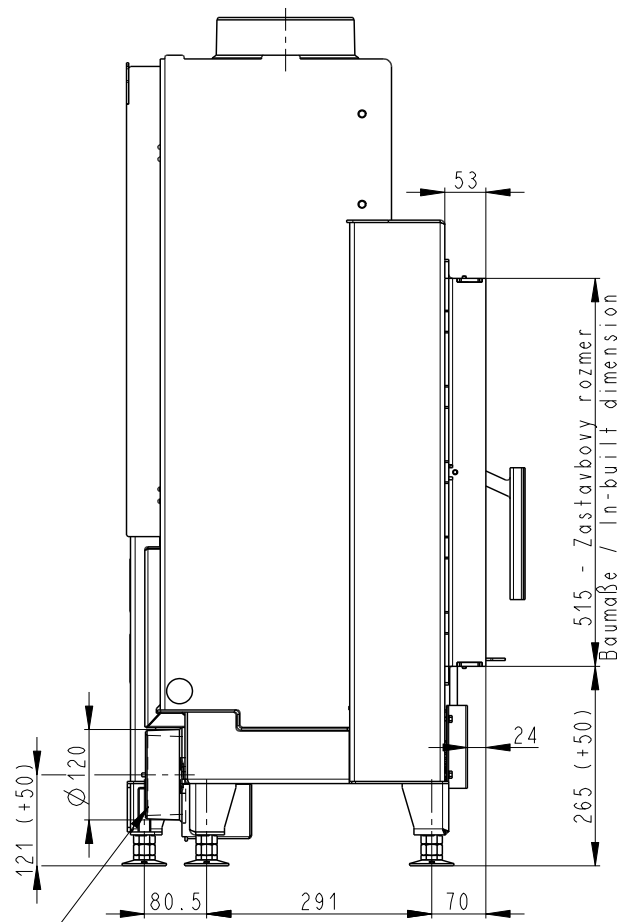
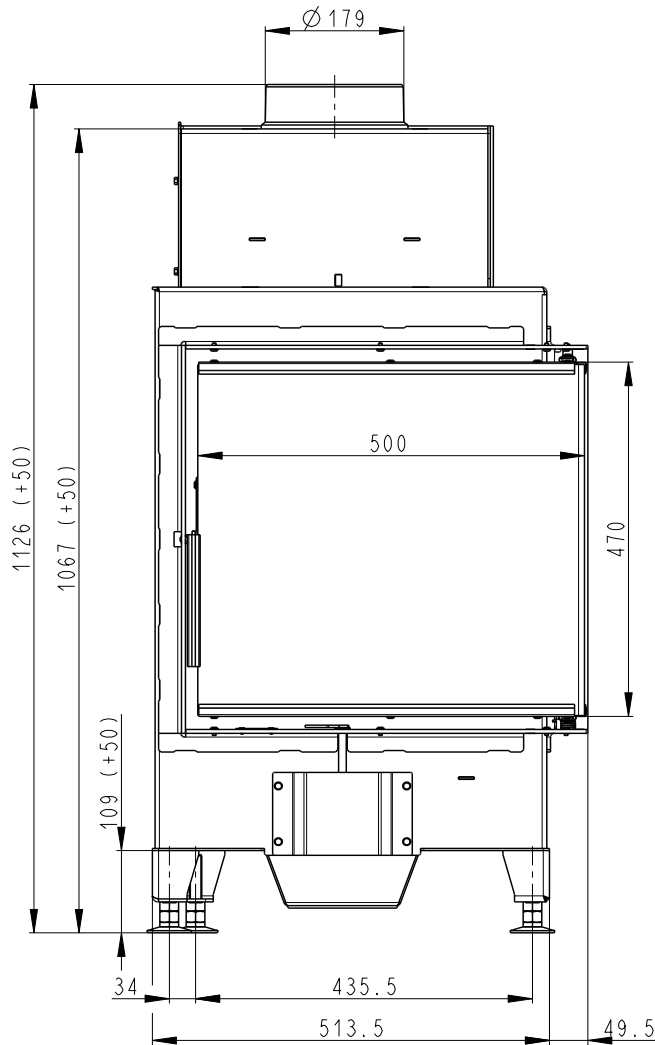
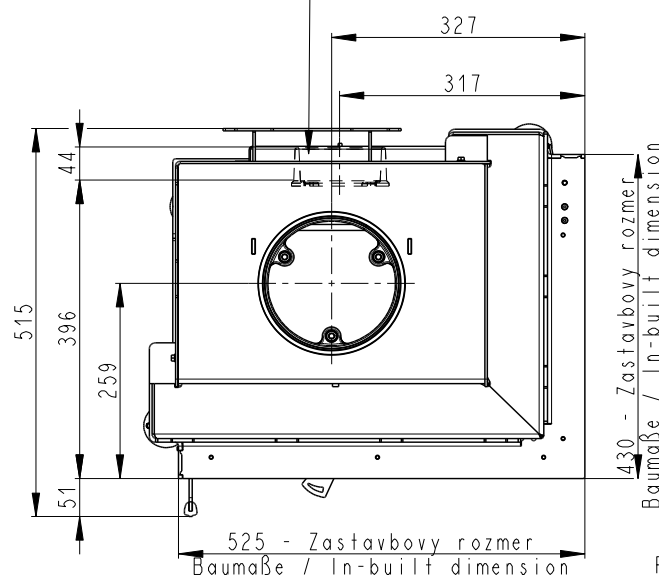


HEAT R 2g S 50.51.40.01



Centralni privod vzduchu
Central air inlet
Zentralluftzufuhr

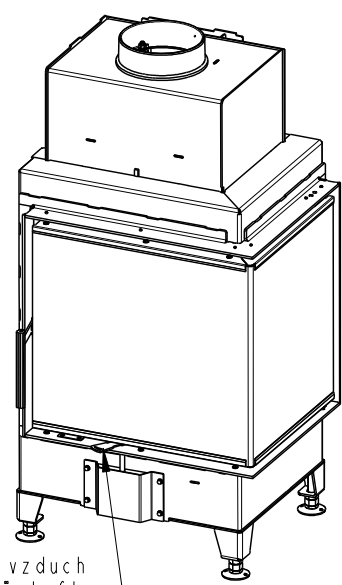
Litiny odvod koure - Cast iron spigot - Der gusseiserne Rauchabgang



430 - Zastavbovy rozmer
Baumaße / In-built dimension

525 - Zastavbovy rozmer
Baumaße / In-built dimension

Primarni a sekundarni vzduch
Primärluft und Sekundärluft
Primary and secondary air



Artikl	HR2SE 01
--------	----------

General data

Nominal heat output	kW	6,5
Efficiency	%	82,02
Mass of the test fuel fired hourly	kg/h	1,96
Dry flue gases mass flow	g/s	5,7
Mean flue gas temperature	°C	237
Flue draught	Pa	10
Weight	kg	130
CO ₂	%	9,55

Recommended values

Reg.output	kW	3,3 – 8,6
Max. mass of the test fuel fired hourly	kg/h	3,2
Min. cross section of convect air inlet for nominal output	cm ²	880
Min. cross section of convect air outlet for nominal output	cm ²	1120
Combustion air requirement	m ³ /h	11,3
Flue gas connector diameter	mm	150 - 180

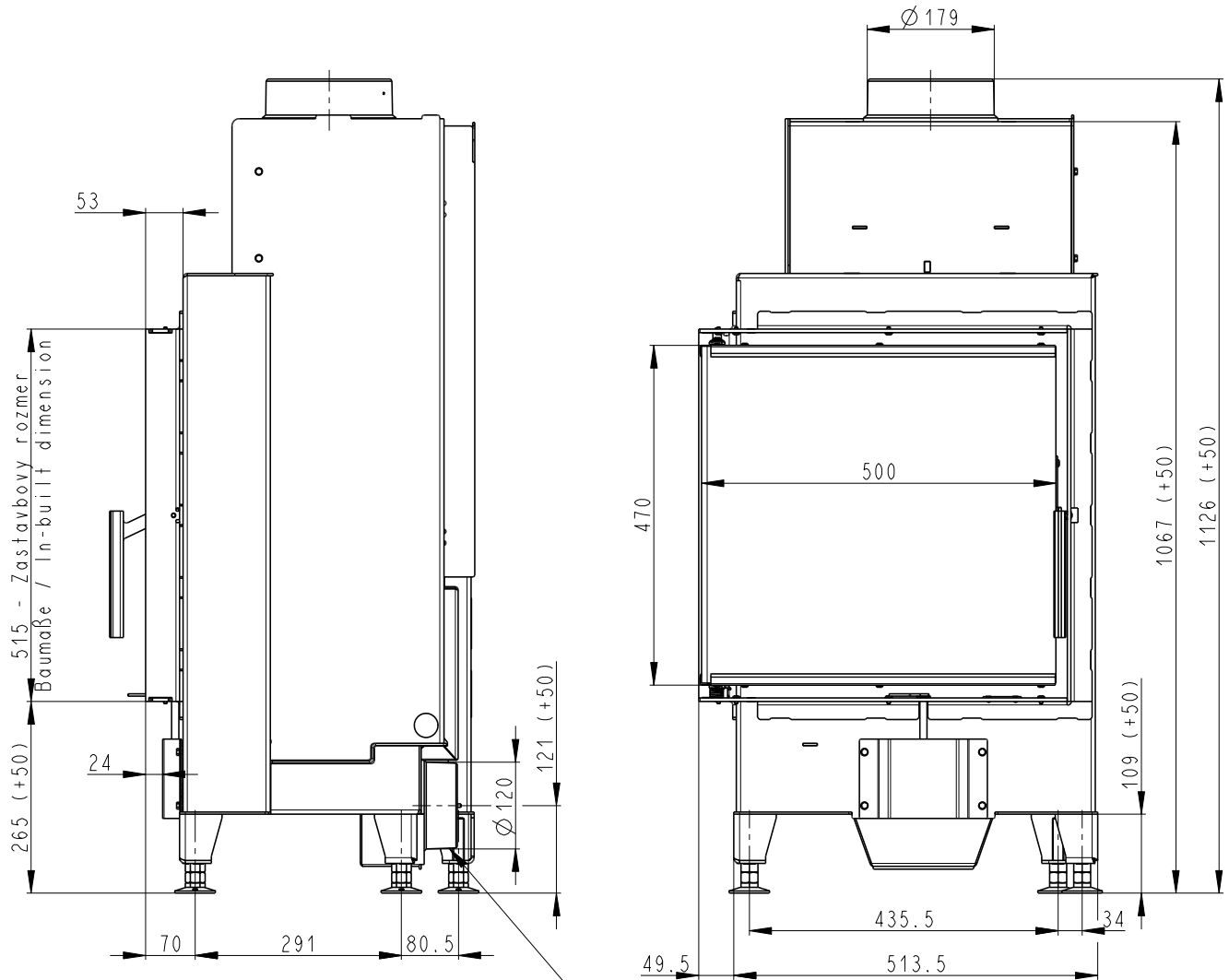
Meets requirement limit values for

EN 13 229	•
BImSch V 1	•
BImSch V 2	•
DIN plus	•
15a B-VG	•

Supplied accessories

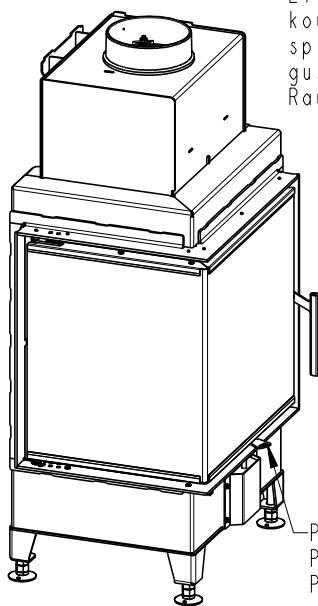
Holder with magnet	•
Hook to open the ashtray	-
Ashtray	-

HEAT L 2g S 50.51.40.01

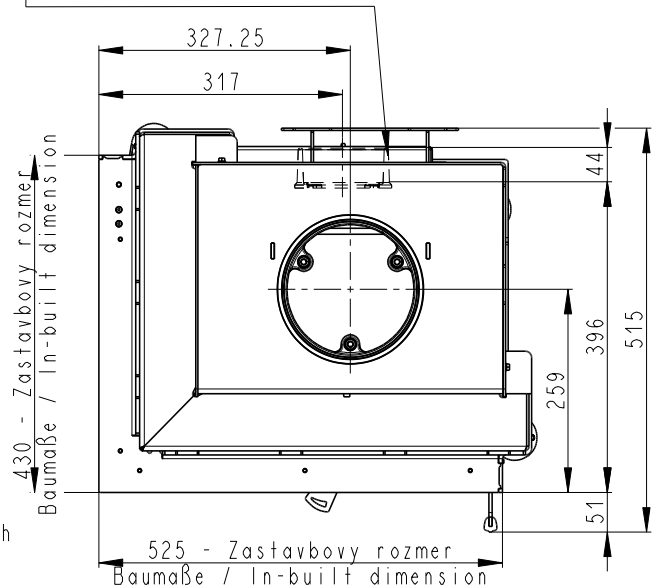


Litínový odvod kouře - Cast iron spigot - Der gusseiserne Rauchabgang

Centralni privod vzduchu
Central air inlet
Zentralluftzufuhr



Primarni a sekundarni vzduch
Primärluft und Sekundärluft
Primary and secondary air



Artikl	HL2SE 01
--------	----------

General data

Nominal heat output	kW	6,5
Efficiency	%	82,02
Mass of the test fuel fired hourly	kg/h	1,96
Dry flue gases mass flow	g/s	5,7
Mean flue gas temperature	°C	237
Flue draught	Pa	10
Weight	kg	130
CO ₂	%	9,55

Recommended values

Reg.output	kW	3,3 – 8,6
Max. mass of the test fuel fired hourly	kg/h	3,2
Min. cross section of convect air inlet for nominal output	cm ²	880
Min. cross section of convect air outlet for nominal output	cm ²	1120
Combustion air requirement	m ³ /h	11,3
Flue gas connector diameter	mm	150 - 180

Meets requirement limit values for

EN 13 229	•
BImSch V 1	•
BImSch V 2	•
DIN plus	•
15a B-VG	•

Supplied accessories

Holder with magnet	•
Hook to open the ashtray	-
Ashtray	-